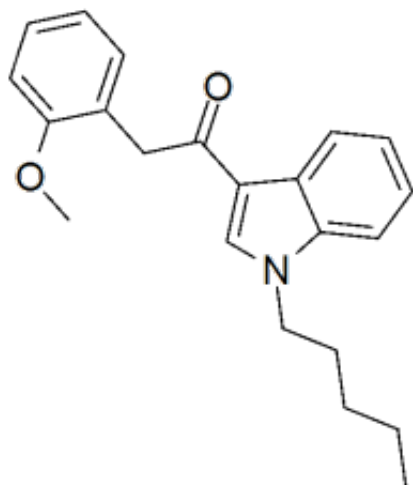


## JWH-250 1mg/ml



**Product Code:** SL-J-02500  
**Weight:** 1.00mg

### Short Description

High purity JWH-250 (1-pentyl-3-(2-methoxyphenylacetyl)indole)methanone) solution includes a comprehensive Certificate of Analysis and all supporting analytical data

### Description

This reference standard solution comes with a comprehensive Certificate of Analysis.

Availability: In-Stock

Controlled Substance: US DEA Exempt product C10-170-424, for research and diagnostic use only

CAS: 864445-43-2

1ml of 1 mg/ml ;

O=C(CC1=CC=CC=C1OC)C2=CN(CCCCC)C3=CC=CC=C32